

FS 60 K/V/S CURTAIN WALL SYSTEM

A new generation
Curtain Wall System which
offers all opening options
with Structural Glazing,
Two Side, With Cap
alternatives.



In comparison to 50mm curtain wall systems, 60mm provides wider glass applications and wider application areas. With different sized transom and mullion profiles, it provides the application of the system in all kinds of projects, designed for different purposes.

These systems; which have different types of isolators to obtain high level of insulation, are also an ideal solution for angular façade surfaced & roofs.

It has a profile wall thickness between 1.8 mm and 2.0 mm, the system allows glass usage up to 52 mm.



FS 60 K/V/S CURTAIN WALL SYSTEM

TECHNICAL SPECIFICATIONS

System Visible Width: 60 mm

System Depth: 80 – 205 mm

Glass Thickness: between 6 mm and 52 mm

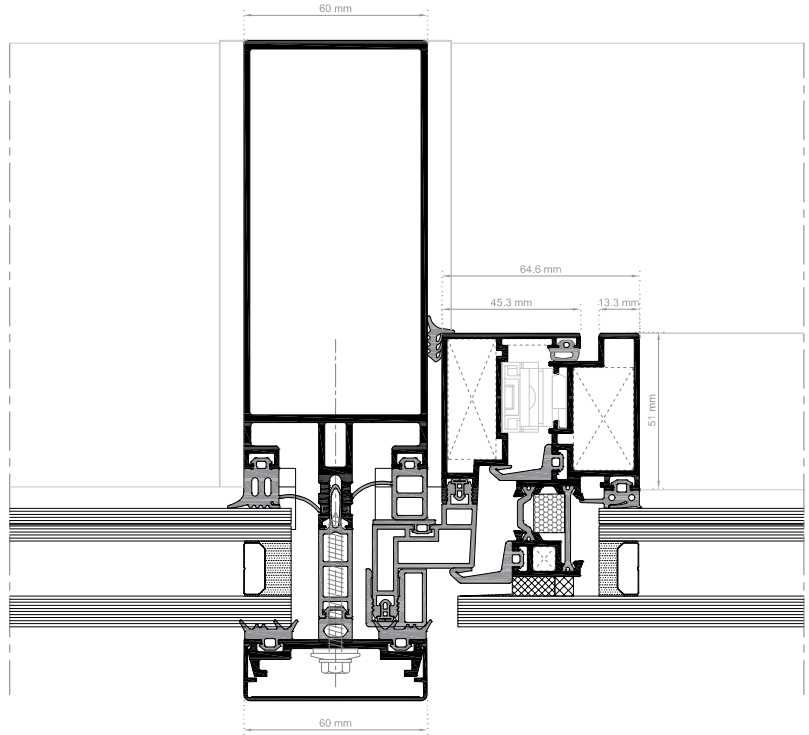
PERFORMANCE FEATURES

Air Permeability: A4 - 600 Pa / EN 12152

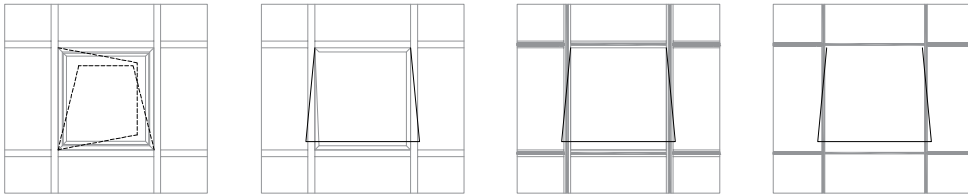
Water Tightness: RE750 - 750 Pa / EN 12154

Resistance to Wind Load: 1440 Pa / EN 13116

Thermal Insulation (Uf) < 1.9 W/m²K



OPENING TYPES



--- inward opening
 - - - outward opening

