

## FS 50 K/V/S CURTAIN WALL SYSTEM

A new generation  
Curtain Wall System which  
offers all opening options  
with Structural Glazing,  
Two Side, With Cap  
alternatives.

In addition to plaza, office, hospital, public building and education buildings, the curtain wall systems are also being used in residential buildings. Among all the curtain wall systems, FS50 Curtain Wall system is the most preferred system.

Depending on the inertia moments for construction, desired opening types can be applied by different sized mullion and transom profiles come together in the system.

These systems; which have different types of isolators to obtain high level of insulation, are also an ideal solution for angular façade surfaced & roofs. It has a profile wall thickness between 1.6 mm and 2.0 mm, the system allows glass usage up to 52 mm.



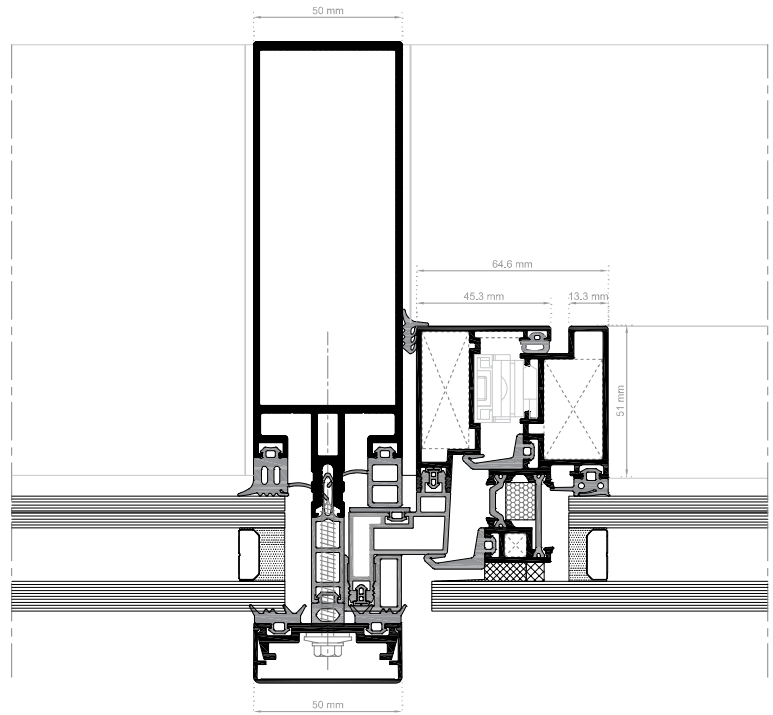
## FS 50 K/V/S CURTAIN WALL SYSTEM

### TECHNICAL SPECIFICATIONS

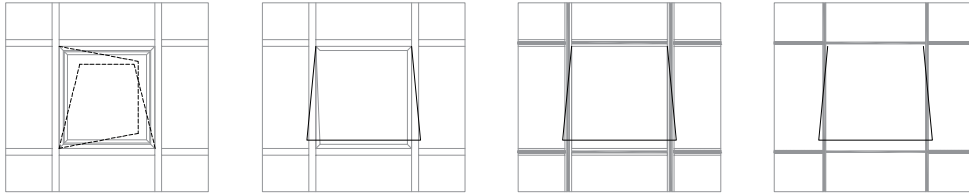
System Visible Width: 50 mm  
 System Depth: 80 – 240 mm  
 Glass Thickness: between 6 mm and 52 mm

### PERFORMANCE FEATURES

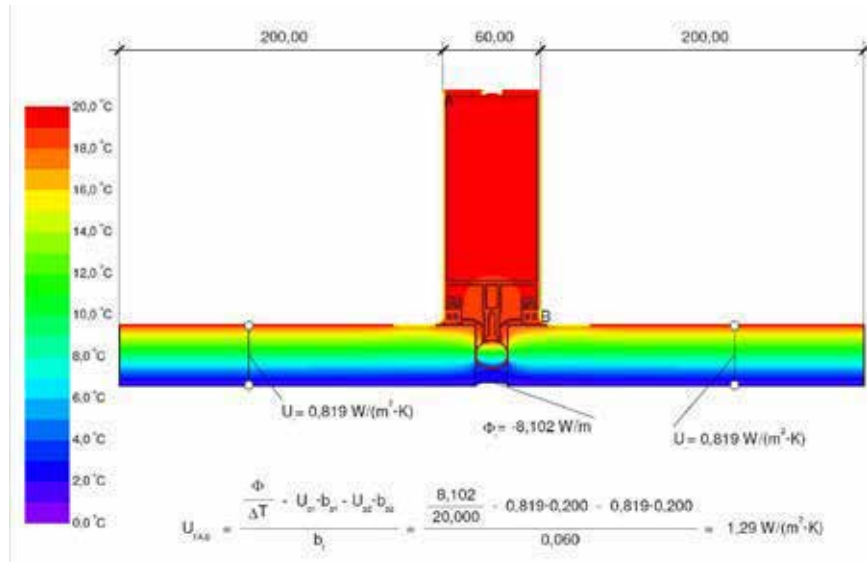
Air Permeability: A4 - 600 Pa / EN 12152  
 Water Tightness: RE1500 - 1500 Pa / EN 12154  
 Resistance to Wind Load: 2400 Pa / EN 13116  
 Thermal Insulation ( $U_f$ ) < 1.9 W/m<sup>2</sup>K



### OPENING TYPES



----- inward opening  
 \_\_\_\_\_ outward opening



Material	$\lambda$ [W/(m·K)]	$c$	Boundary Condition	$q$ [W/m <sup>2</sup> ]	$t$ [°C]	$R$ [(m <sup>2</sup> ·K)/W]	$c$
Aluminum (Si alloys)	163,000	0,900	Epsilon 0.9				0,900
EPDM (ethylene propylene diene monomer)	0,230	0,900	Exterior frame	0,000	0,040	0,130	
FOAMGLAS Wall Board W+F	0,036	0,900	Interior frame, normal	20,000	0,130		
Panel	0,035	0,900	Interior frame, recessed	20,000	0,200	0,200	
Silicone, pure (2)	0,350	0,900	Symmetry/Model section	0,000			
Unventilated air cavity							